



ST ALOYSIUS CATHOLIC PRIMARY SCHOOL

Uniform & Grooming Policy

APPLICABLE TO Staff, students and parents

DOCUMENT OWNER Principal

APPROVAL DATE: TBA

APPROVED BY: Staff

SCHOOL ACTIONS: School Policy – Staff are to ensure practices are consistent with this policy.

NEXT REVIEW DATE December 2024

AIMS

- Promote equality, pride and a sense of belonging amongst all students.
- Give meaning and expression to the school's mission statement and visual identity.
- Provide a functional, fashionable and durable uniform that is cost effective and practical for our school environment.
- Give visual expression of the high standards of the school in gaining and maintaining community trust and respect.

SCOPE

This policy applies to all students, with an expectation of full support from all staff and parents.

IMPLEMENTATION

- Guidelines for both the uniform and grooming will be explained to parents at meetings, in written correspondence and the enrolment process.
- Regular reminders to parents on uniform and grooming requirements will be published in the school newsletters. Students will also receive regular reminders at school.

- Uniform and grooming checks will occur on a regular basis.
- Parents are requested to provide a note of explanation if their child is unable to wear the expected uniform on any day for any reason. If a note is not provided the child will be provided with a reminder slip to be taken home and signed. Consistent non-compliance will result in a phone call by teacher or leadership member.
- Families who are struggling financially may apply for assistance in providing a uniform for their child by contacting the Principal or Assistant Principal.
- Parents seeking exemptions to the Uniform Dress Code due to religious beliefs, ethnic or cultural background, student disability, health condition or economic hardship must apply in writing to the Principal.
- The Principal will decide on any changes to the uniform after consultation with the school community.
- Students are expected to always wear the correct uniform and in a manner which enhances the positive image of the school in the community.

GUIDELINES

Uniform:

- Students are required to wear the correct school uniform and take pride in their personal appearance. They should be neat and well groomed.
- Students travelling to and from school are to wear the full school uniform to the required standard.
- Students must wear the full uniform on excursions and at special events, unless otherwise specifically indicated.
- Only approved uniform garments are to be worn.
- Sports uniform is only to be worn on sports days, days in which they have a P.D/Health/P.E and on other special occasions as decided by the school. Days for sports uniform will be communicated to parents by the class teacher.
- Long pants should be hemmed neatly and sit on the shoe in such a way that does not create a potential trip hazard.
- Skirt and dresses to be worn at knee length or just above.
- Undergarments must not be visible.
- All buttons are to be done up when wearing the winter uniform and the shirt is to be tucked in.
- The top shirt button is to be undone, with no tie to be worn, when wearing summer uniform. The shirt must not be tucked in while in summer uniform.

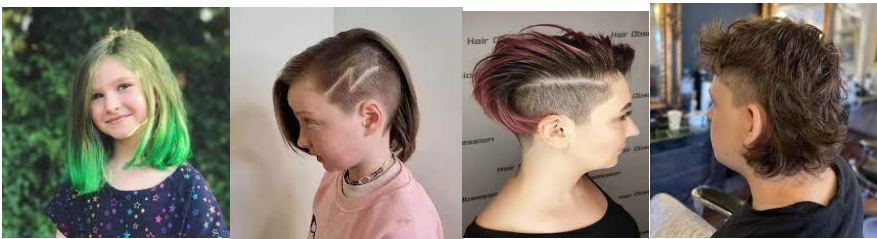
Jewellery:

- Jewellery items permitted are watches and a single non-raised ring. No other jewellery is permitted.
- Students with pierced ears are permitted to wear a single piercing of sleepers or studs in one or both ear lobes but not spacer jewellery (silver or gold Jewellery only).
- If jewellery puts them or other students at risk of injury they will also be asked to remove these items.

Grooming for all students

- Hair is to be of natural colour, clean and tidy. All extreme styles are to be avoided
- Styles are expected to be reasonably conservative and guided by common sense.
- Unacceptable styles include marked change from a natural hair colour, or extreme contrast in balayage or streaked hair. Other unacceptable hairstyles include radical hairstyles such as mullets, rat tails, dreadlocks, mohawks, extreme uneven grades, extreme undercuts, and patterns or designs shaved into the hair.

Unacceptable haircuts/styles for School



Hair beyond the collar or over the eyes is to be always tied back. Hair accessories are to be conservative and in school colours.

- No makeup to be worn.
- A clear coat of nail polish on natural nails is permitted

Shoes:

All black leather, plain, lace-up, buckle or Velcro and fully enclosed school shoe with a standard heel.

Acceptable School Shoes



Sports shoes are to be a fully enclosed sport shoe, appropriate to play sports and give adequate ankle support of any colour. No Boots, Vans, Converse or casual shoes.

Out of Uniform Days:

From time to time, students will be required to participate in out of uniform days. Whilst there may be exceptions, generally, students will need to follow these guidelines;

- Shorts must be of equal length or longer than their school sport shorts.
- Midriff tops are not to be worn.
- Shoulders must be covered – no singlet, sleeveless or cold shoulder shirts.
- Undergarments must not be visible.
- Grooming, including hair, jewellery, makeup, piercings etc remains the same as the Uniform and Grooming Policy.
- Shoes must be fully enclosed.
- All logos/images on garments must be appropriate



UNIFORM POLICY

APPENDIX 1 – Uniform requirements

GIRLS UNIFORM

Summer Uniform

<i>Tunic</i>	St Aloysius teal & white check with white piping
<i>Culottes</i>	St Aloysius teal & white check
<i>Blouse</i>	White short sleeve blouse w/ piping & embroidery
<i>Socks</i>	White ankle foldover
<i>Sloppy Joe/</i>	
<i>Woollen Jumper</i>	Teal with emblem
<i>Shoes</i>	Black leather school shoes (see Appendix)
<i>Hat</i>	Navy/teal reversible hat with emblem

Winter Uniform

<i>Pinafore</i>	St Aloysius teal, navy & white tartan
<i>Shirt</i>	White long sleeve with navy piping
<i>Socks/Stockings</i>	Navy knee high socks or navy stockings
<i>Sloppy Joe/</i>	
<i>Woollen Jumper</i>	Teal with emblem
<i>Pants (optional)</i>	Navy (not tights)
<i>Shoes</i>	Black leather school shoes (see Additional Information)
<i>Jacket</i>	Navy & teal tracksuit jacket

Sports Uniform

<i>Polo shirt</i>	Navy & teal with emblem
<i>House Polo shirt</i>	House colour & navy trim
<i>Shorts/Skort</i>	Navy with teal piping
<i>Socks</i>	White ankle height w/ teal & navy stripes & navy sole
<i>Shoes</i>	White joggers
<i>Tracksuit</i>	Navy & teal with emblem

BOYS UNIFORM

Summer Uniform

<i>Shirt</i>	Teal short sleeve shirt w/ navy piping & emblem
<i>Shorts</i>	Navy
<i>Socks</i>	Navy ankle foldover
<i>Sloppy Joe/</i>	Teal with emblem
<i>Woollen Jumper</i>	
<i>Shoes</i>	Black leather school shoes (see Appendix)
<i>Hat</i>	Navy/teal reversible hat with emblem

Winter Uniform

<i>Shirt</i>	Teal long sleeve shirt with emblem
<i>Trousers</i>	Navy
<i>Tie</i>	St Aloysius teal, navy & white tartan
<i>Sloppy Joe/</i>	Teal with emblem
<i>Woollen Jumper</i>	
<i>Socks</i>	Navy ankle foldover
<i>Shoes</i>	Black leather school shoes (see Additional Information)
<i>Jacket</i>	Navy & teal tracksuit jacket

Sports Uniform

<i>Polo shirt</i>	Navy & teal with emblem
<i>House Polo shirt</i>	House colour & navy trim
<i>Shorts</i>	Navy with teal piping
<i>Socks</i>	White ankle height w/ teal & navy stripes & navy sole
<i>Shoes</i>	White joggers
<i>Tracksuit</i>	Navy & teal with emblem